

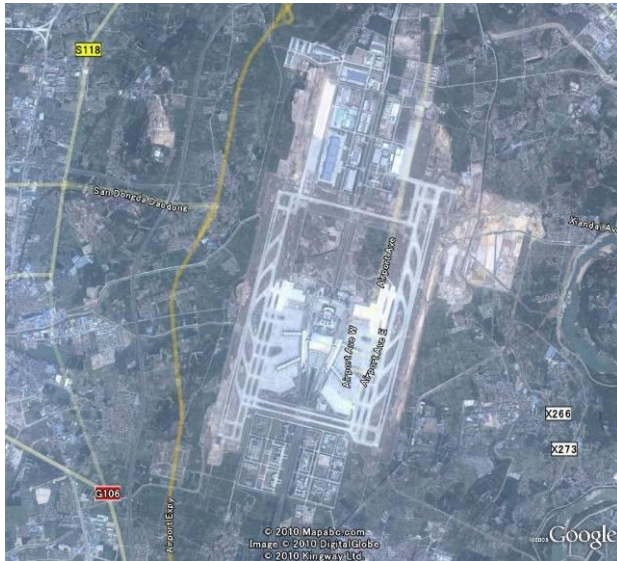
Air Traffic Management Bureau (China)



Head Coordinator	
Name	Ling Gang
Title	Air Traffic Flow Management Office
Affiliation	Air Traffic Management Bureau, Civil Aviation Authority of China
Address	No.12 East San-huan Road Middle, Chaoang District, Beijing
TEL	86 10 8778 6587
FAX	86 10 8778 6580
E-mail	lingang@atmb.net.cn

	Airport Name	Code	TTY	E-mail	Web Site
Level 3	Guangzhou	CAN	BJSCKCA	lingang@atmb.net.cn	
	Chongqing Jiangbei	CKG	BJSCKCA	shake@atmb.net.cn	
	Chengdu Shuangliu	CTU	BJSCKCA	shake@atmb.net.cn	
	Dalian Zhoushuizi	DLC	BJSCKCA	shake@atmb.net.cn	
	Hangzhou Xiaoshan	HGH	BJSCKCA	shake@atmb.net.cn	
	Kunming Wujiaba	KMG	BJSCKCA	shake@atmb.net.cn	
	Beijing	PEK	BJSCKCA	lingang@atmb.net.cn	
	Shanghai	PVG	BJSCKCA	lingang@atmb.net.cn	
	Shenzhen Baoan	SZX	BJSCKCA	shake@atmb.net.cn	
	Tianjin Binhai	TSN	BJSCKCA	shake@atmb.net.cn	
Xi'an Xianyang	XIY	BJSCKCA	shake@atmb.net.cn		

Guangzhou Airport (China)



Airport Name	Guangzhou Baiyun International Airport (IATA: CAN, ICAO: ZGGG)		
Airport Location	28km north of city center		
Airport Coordinate	23 23.33N 113 17.56E		
Runways	A runway	02L/20R	3,600m (11,811ft)
	B runway	02R/20L	3,800m (12,467ft)
			3,800m (12,467ft) Under construction
Passenger Terminal	Terminal 1		
	Terminal 2		531,000m ² Under construction
Airport Parking	166 (Passenger and Cargo)		

		2006	2007	2008
Aircraft Movements (Thousand)	Domestic			
	International			
	Total			
Annual Passenger (Thousand)	Domestic			
	International			
	Total			
Annual Cargo (Thousand)	Domestic			
	International			
	Total			

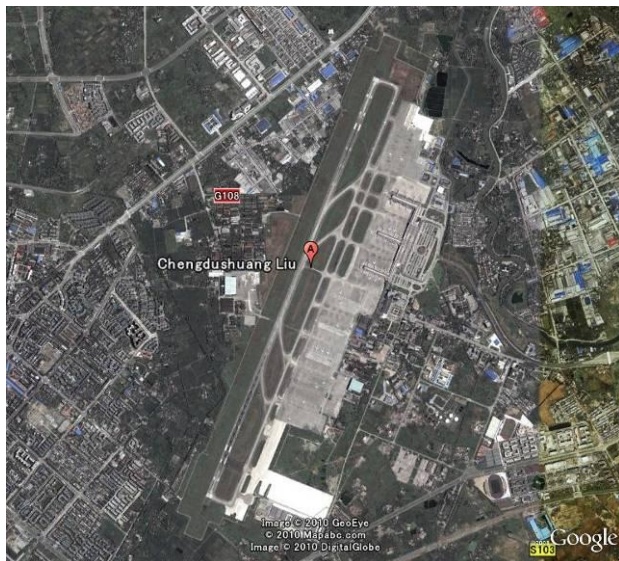
Chongqing Jiangbei Airport (China)



Airport Name	Chongqing Jiangbei International Airport (IATA: CKG, ICAO: ZUCK)		
Airport Location	21km north east of city center		
Airport Coordinate			
Runways	A runway	02/20	3,200m (10,499ft)
	B runway		Under construction
Passenger Terminal	International		1 million passengers
	Domestic		7 million passengers
Airport Parking			

		2006	2007	2008
Aircraft Movements (Thousand)	Domestic			
	International			
	Total			
Annual Passenger (Thousand)	Domestic			
	International			
	Total			
Annual Cargo (Thousand)	Domestic			
	International			
	Total			

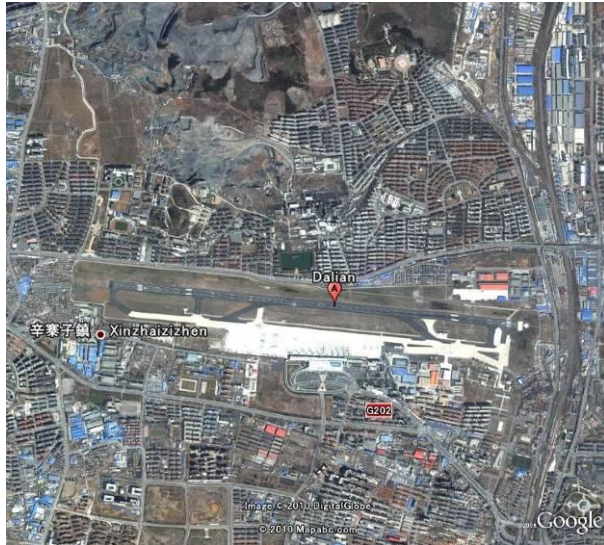
Chengdu Shuangliu Airport (China)



Airport Name	Chengdu Shuangliu International Airport (IATA: CTU, ICAO: ZUUU)		
Airport Location	16km south west of city center		
Airport Coordinate	30 34.42N 103 56.49E		
Runways	A runway	02/20	3,600m (11,811ft)
Passenger Terminal	International	2 aerobridges	
	Domestic	16 aerobridges	
Airport Parking	57 parking spots		

		2006	2007	2008
Aircraft Movements (Thousand)	Domestic			
	International			
	Total			
Annual Passenger (Thousand)	Domestic			
	International			
	Total			
Annual Cargo (Thousand)	Domestic			
	International			
	Total			

Dalian Zhoushuizi Airport (China)



Airport Name	Dalian Zhoushuizi International Airport		
Airport Location	9km north west of city center		
Airport Coordinate	38 57.56N 121 32.18E		
Runways	A runway	10/28	3,300m (10,827ft)
Passenger Terminal			
Airport Parking			

		2006	2007	2008
Aircraft Movements (Thousand)	Domestic			
	International			
	Total			
Annual Passenger (Thousand)	Domestic			
	International			
	Total			
Annual Cargo (Thousand)	Domestic			
	International			
	Total			

Hangzhou Xiaoshan Airport (China)



Airport Name	Hangzhou Xiaoshan International Airport (IATA: HGH, ICAO: ZSHC)		
Airport Location	27km east of city center		
Airport Coordinate	30 13.46N 120 26.04E		
Runways	A runway	07/25	3,600m (11,811ft)
Passenger Terminal	Terminal	100,000m ² 18 aerobridges	
Airport Parking			

		2006	2007	2008
Aircraft Movements (Thousand)	Domestic			
	International			
	Total			
Annual Passenger (Thousand)	Domestic			
	International			
	Total			
Annual Cargo (Thousand)	Domestic			
	International			
	Total			

Kunming Wujiaba Airport (China)



Airport Name	Kunming Wujiaba International Airport (IATA: KMG, ICAO: ZPPP)		
Airport Location	4km south east of city center (New Airport is under construction)		
Airport Coordinate	24 59.32N 102 44.37E		
Runways	A runway	03/21	3,400m (11,155ft)
Passenger Terminal			
Airport Parking			

		2006	2007	2008
Aircraft Movements (Thousand)	Domestic			
	International			
	Total			
Annual Passenger (Thousand)	Domestic			
	International			
	Total			
Annual Cargo (Thousand)	Domestic			
	International			
	Total			

Beijing Airport (China)



Airport Name	Beijing Capital International Airport (IATA: PEK, ICAO: ZBAA)		
Airport Location	32km north east of city center		
Airport Coordinate	40 04.48N 116 35.04E		
Runways	A runway	18L/36R	3,800m (12,468ft)
	B runway	18R/36L	3,200m (10,499ft)
	C runway	01/19	3,800m (12,468ft)
Passenger Terminal	Terminal 1	60,000m ² , Domestic 16 gates	
	Terminal 2	Domestic and International	
	Terminal 3C	Domestic	
	Terminal 3D	Olympic Hall	
	Terminal 3E	International	
Airport Parking			

		2006	2007	2008
Aircraft Movements (Thousand)	Domestic			
	International			
	Total			
Annual Passenger (Thousand)	Domestic			
	International			
	Total			
Annual Cargo (Thousand)	Domestic			
	International			
	Total			

Shanghai Airport (China)



Airport Name	Shanghai Pudong International Airport (IATA: PVG, ICAO: ZSPD)		
Airport Location	32km south east of city center		
Airport Coordinate	31 08.36N 121 48.19E		
Runways	A runway	16/34	3,800m (12,467ft)
	B runway	17L/35R	4,000m (13,123ft)
	C runway	17R/35L	3,400m (11,154ft)
Passenger Terminal	Terminal 1		
	Terminal 2		
Airport Parking			

		2006	2007	2008
Aircraft Movements (Thousand)	Domestic			
	International			
	Total			
Annual Passenger (Thousand)	Domestic			
	International			
	Total			
Annual Cargo (Thousand)	Domestic			
	International			
	Total			

Shenzhen Bao'an Airport (China)



Airport Name	Shenzhen Bao'an International Airport (IATA: SZX, ICAO: ZGSZ)		
Airport Location	32km north west of city center		
Airport Coordinate	22 38.22N 113 48.39E		
Runways	A runway	15/33	3,400m (11,155ft)
Passenger Terminal	Terminal A		Domestic
	Terminal B		Domestic and International
Airport Parking	53 parking spaces		

		2006	2007	2008
Aircraft Movements (Thousand)	Domestic			
	International			
	Total			
Annual Passenger (Thousand)	Domestic			
	International			
	Total			
Annual Cargo (Thousand)	Domestic			
	International			
	Total			

Tianjin Binhai Airport (China)



Airport Name	Tianjin Binhai International Airport (IATA: TSN, ICAO: ZBTJ)		
Airport Location	12km east of city center		
Airport Coordinate	39 07.28N 117 20.46E		
Runways	A runway	16R/34L	3,600m (11,811ft)
	B runway	16L/34R	3,200m (10,499ft)
Passenger Terminal	Terminal	500,000m ²	
Airport Parking			

		2006	2007	2008
Aircraft Movements (Thousand)	Domestic			
	International			
	Total			
Annual Passenger (Thousand)	Domestic			
	International			
	Total			
Annual Cargo (Thousand)	Domestic			
	International			
	Total			

Xi'an Xianyang Airport (China)



Airport Name	Xi'an Xianyang International Airport (IATA: XIY, ICAO: ZLXY)		
Airport Location	26km north west of city center		
Airport Coordinate	34 26.49N 108 45.05E		
Runways	A runway	05/23	3,000m (9,842ft)
Passenger Terminal	International		9 aerogates
	Domestic		6 aerogates
Airport Parking			

		2006	2007	2008
Aircraft Movements (Thousand)	Domestic			
	International			
	Total			
Annual Passenger (Thousand)	Domestic			
	International			
	Total			
Annual Cargo (Thousand)	Domestic			
	International			
	Total			